

Report of the East North East Divisional Community Safety Partnership

Outer East Area Committee

Date: 5 July 2011

Subject: North East Divisional Community Safety Partnership Annual Report

Electoral Wards Affected:

Cross Gates & Whinmoor
Temple Newsam
Garforth & Swillington
Kippax & Methley

Specific Implications For:

Equality and Diversity

Community Cohesion

Narrowing the Gap

Council
Function

Delegated
Executive Function
available for Call In

Delegated Executive
Function not available
for Call In Details set
out in the report

Executive Summary

This report provides Members of the Area Committee with an overview of the performance of the North East Divisional Community Safety Partnership and ward based Neighbourhood Policing Teams. It will also include details of the key initiatives that have been delivered in local communities to reduce crime and disorder. The report focuses upon the period 1st April 2010 to 31st March 2011.

Recommendations

The Area Committee is asked to note the contents of this report of the North East Divisional Community Safety Partnership.

Members are asked to continue supporting the Divisional Community Safety Partnership in relation to prioritising and tackling Burglary Dwelling during 2011/12 through partnership work at neighbourhood level.

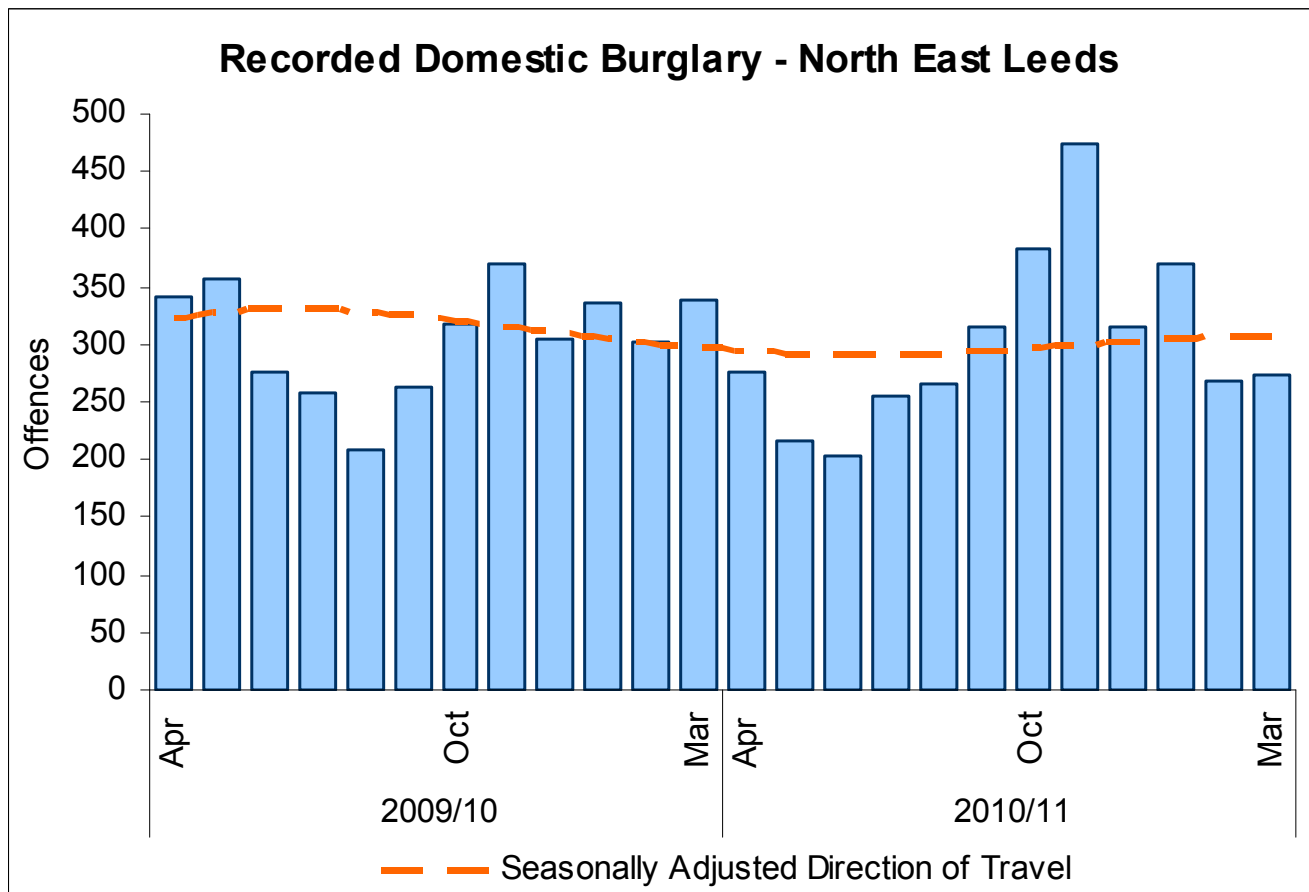
Purpose of this report

1. The report will focus on the following key issues:
 - Update Members on progress and outputs of the Neighbourhood Management Tasking Arrangements
 - Report on Thematic Sub Groups and activities
 - Report on the Performance of the NE Police Division and partnership
 - Summary of ward crime statistics, public confidence and user satisfaction
 - Report on multi agency 'Operation Champions'
 - Report on agreed community initiatives funded via Proceeds of Crime confiscations (POCA).

Main issues

Update on the structure of the North East Police Divisional Community Safety Partnership and Neighbourhood Management Tasking Arrangements

2. The Divisional Community Safety Partnership (DCSP) Strategic Plan 2011- 2015 is currently in development and will be the framework upon which the DCSP will develop activity and management performance against strategic outcomes of the city, defined by The Safer and Stronger Communities Board Partnership plan 2011-2015 which will focus on delivering the following strategic priorities:
 - Reducing crime levels and its impact across Leeds
 - Effectively Tackle and Reduce Anti-social behaviour in our Communities
3. We are currently awaiting ratification of the Safer Leeds performance targets and performance framework for 2011/12.
4. Attached is a brief of the final Divisional targets (10/11) based on actual outturns and Divisional Targets set for 2011/12 (see Appendix A).
5. Burglary Dwelling remains a key pressure in relation to allocation of resources both staffing and financial. Tackling burglary dwelling remains a key priority within the Division and across the whole of Leeds, we are working closely with Safer Leeds Strategic burglary group to maximise opportunities for closer working and sharing good practise and continue to deliver initiatives at a local neighbourhood level. Although we missed our divisional target by 357 offences we still achieved a 1.6% reduction on 2009/10 despite high peaks in October, November and January (see chart on next page).



6. Attached is an updated structure chart for the North East Divisional Community Safety Partnership (see Appendix B) with details of the relevant lead officers. The structure will be reviewed to ensure delivery against new priorities.
7. A review took place in September to discuss multi-agency operations 'Operation Champion' across neighbourhoods and how it would be delivered during 2011. It was agreed to continue delivering a minimum of one day of action per Neighbourhood Policing Team per six weekly tasking cycle. The themed approach has proved successful and has led to more focussed targeting of issues/areas. A timetable has been produced for 2011. Please note that on occasions these dates may change due to operational demands or unforeseen circumstances.

POCA

8. Following the success of the project during 2009/10, the North East Division allocated a total of £39,639 funding confiscated from criminals under the Proceeds of Crime Act to the Divisional Community Safety Partnership during 2010/11 to continue to support local groups with community projects/activities. In total, across the whole division, we approved and funded 124 applications and spent £38,677. We have received numerous emails showing appreciation and thanks for support. Information regarding the awards continue to be advertised in the neighbourhood management/ Neighbourhood Policing Team newsletters and on the police Neighbourhood Policing Team websites. We will be continuing the scheme into 2011/12 and have received funding for the first quarter of the year. Appendix C provides a summary of projects funded in the Outer East area.

Public Confidence and Satisfaction

9. North East Leeds continues to have the highest Public Confidence in Local Policing during 2010/11 at 60.3% (March 2011) compared with the West Yorkshire force average of 52.3%.
10. Operation Confidence commenced in February 2009 and is a contributing factor to the high rates of public confidence. The North East Division produces 11 neighbourhood management newsletters detailing partnership activity around crime and grime within the Neighbourhood Policing Team and delivers to 128,000 households. Feedback from residents continues to be positive and illustrates they are pleased to be kept informed around crime and grime issues. Funding has been secured for 2011 and contributions have been agreed by North East Police Division, East North East Homes, Aire Valley Homes and Safer Leeds Partnership.

Neighbourhood Management Tasking Key Achievements 2010/11

11. The eleven neighbourhood management tasking teams continue to meet six weekly and are still firmly embedded into agencies day to day business and members continue to attend and support meetings.
12. This is not an exhaustive list of activities but includes key achievements from each of the 3 Outer East neighbourhood management tasking teams (data extracted from Divisional Community Safety Partnerships executive quarterly highlight reports).

13. Temple Newsam

- Target hardening operation completed in the Templegates Area with the neighbourhood policing team and CASAC .
- Plan of action agreed with Police, ASBU, Housing, LeedsWatch and Parks/Countryside to tackle nuisance motorbikes during the summer holidays.
- Funding bid submitted to East North East Homes Area Community Panel to remove block paving from Cartmell Drive and tarmac area. Loose bricks currently being used as missiles and incidents of attacks on buses reported through tension process. The bid was successful and the work has now been completed.
- Operation Champions have taken place in Halton Moor and Osmondthorpe with the theme of reassurance and engagement.
- Two visual environmental audits have been completed and enforcement action taken by housing and environmental action teams.
- Funding agreed from tasking and prevent to deliver '3 day train the trainer' training from 'Rewind'.
- Environmental issues resolved at Halton Moor Public House Carpark – ongoing monitoring continues.
- 'Asylum Seeker Myth Busting leaflets' distributed across the ward.
- Additional youth outreach work carried out in the 'Primrose' area by Youth Services.
- Reduction of complaints regarding nuisance motorbikes during the summer holidays. Two section 59's were served on individuals caught on CCTV cameras and joint visits with housing and police to two houses identified that were storing the bikes.
- Fortnightly visits now made to Leeds Watch by PCSO'S to view footage.

- Multi-agency meeting held with partners regarding the development of a management committee for 119 Kendal Drive.
- Research currently in progress around victims of hate crime on Kendal Drive.
- 20-22nd Dec – Further day of action targeting hardening properties in the Templegates area. Project now complete and 100 properties benefited.
- 22nd Dec – Test Purchasing operation in off licenses (Licensing & Police).
- February - Stephen Lawrence Education Standard Launch at Meadowfield Children's Centre, supported by Tasking Partners and Proceeds of Crime funding.
- Funding allocated to provide sash jammers/door chains to properties in burglary hot spots.
- 44 houses target hardened in Wykebecks/Nevilles.
- 18th March - Licensing Operation on local Pubs involving Licensing and Police.
- Two environmental clean ups in Field End/Halton and Colton Retail Park.
- Joint work with Leeds Federated Housing Association regarding a problem tenant in Connistone Gardens which resulted in an eviction.
- Sash jammers fitted to 11 properties on Esthwaite Gardens, funded by Leeds Fed – burglary hot spot.

14. **Crossgates/Whinmoor**

- To reduce crime and ASB at Whinmoor (White Laithe) shopping parade a CCTV system has been installed to cover the shop fronts. The images will be linked to Killingbeck Police station.
- Relocation of trim trail in Stanks. This was installed under Private Finance Initiative scheme but attracted young people that used it as an area to drink and cause rowdy behaviour. Since its relocation the complaints have ceased.
- Euro profile locks – these locks have been identified as having a fault which has led to an increase in burglary. 1000 leaflets funded from tasking were delivered to houses with these locks advising them of the potential problem and giving advice.
- Problems with youth nuisance at St Gregory's Youth & Adult Centre. Additional security and CCTV installed. The problems still continued so all youths causing problems were interviewed by the Youth Officer and given appropriate warnings. Since this happened the problems have greatly reduced.
- An environmental clean up was undertaken on the grounds of the Staging Post Public House with the assistance of Probation. This was a hotspot for underage drinking, smashing glass etc.
- Targeted nuisance motorcycles – PCSO's, Community Environmental Support Officers and Aire Valley Homes staff photographing bikers and police identifying homes of users. Several bikes confiscated.
- 2 hotspot areas identified - Coal Road and Barnbow Factory - where youths gathering and intimidating. Youth Service outreach workers regularly meet with youths on Friday evenings.
- The emphasis at recent meetings has been to target a number of individuals believed to be involved in crime and anti-social behaviour. The Police are carrying out regular home visits to these individuals.
- Operation Hoody in Whinmoor. Complaints at forums about massive groups of youths (up to 200) gathering in Whinmoor on Friday evenings. They were drinking, fighting etc. This operation flooded the area with officers. All names were taken and over 20 of them were visited at home with parents interviewed and warned about their behaviour.

- Main project funded is with Highways to address problem of illegal and inconsiderate parking to houses near train station. There is currently a consultation exercise going ahead with proposal to install double yellow lines to streets near the station. This is joint funded by Tasking and Highways.

15. **Garforth /Villages & Kippax Methley**

- Anti Social Behaviour issues at Kippax Leisure Centre – actions (1.) removed Youth Shelter and relocated to alternative place. (2.) set up a Friday night project with Youth Service – up to 20 youths now attending.
- Bargain Booze in Allerton Bywater – appealed 3 times against licence to sell up to 11pm. Unfortunately LCC lost the appeal.
- Issues re cars speeding around Millennium Village – Police visited residents and arranged for patrols at peak times. The problems have not re-occurred.
- Ongoing issues of ASB around Garden Village Micklefield and skate park – BTP have arranged a skatepark event in July jointly funded by area committees, proceeds of Crime Funding and Youth Service. This gala is for all youths interested in skateboarding.
- Nuisance around Kippax Sports Centre on weekends. Arranged for relocation of youth shelter away from car park. Set up Friday night youth club in centre that now attracts 25 young people. Nuisance greatly reduced.
- Provided £1000 for trembler/shed alarms after increase in burglary in villages
- Hotspot area for drinking youths and nuisance/vandalism- targeted by Community Environmental Enforcement Officers and Police Community Support Officers. Joint visits were made to parents which appears to have had some impact on behaviour.
- There has been an increase in bogus callers targeting elderly and vulnerable particularly in Garforth and Kippax. The tasking group agreed to fund two covert cameras to be used in the homes of those being targeted. In the first two weeks one individual has been charged for carrying out unnecessary work at extortionate rates. The camera evidence has proved to be very useful in being able to press these charges.
- Targeted work at hotspot nuisance and ASB areas eg. Kippax Leisure Centre at weekends. Police liaison with Youth Service and ASBU to address problem causers.
- Recent meetings have focused on actions relating to 6 individuals who are causing problems with their tenancy's due to drink, noise, dirty gardens etc

Thematic Sub Groups and Activities

Most Active / Amber Nominals / Offender Management Burglary Pilot

16. Pilot commenced with regards to the offender management of known burglars. 20 nominals have been selected by the North East Division for the duration of the pilot. The group consists of Youth Offending Service, Probation, Housing, newly established anti-social behaviour unit and West Yorkshire Police. The group will identify where partnership work can be improved to ensure opportunities for closer working and management of offenders are maximised.

Media Campaign - Handling / Receiving Stolen Goods

17. A marketing design has been produced 'Don't sit on the fence', the design has now been ratified by Crime stoppers and West Yorkshire Police marketing department. The campaign was launched during April 2011 following a city wide operation around specific targeting of second hand gold shops suspected of handling or receiving stolen goods.

Nuisance Motorbikes in Halton moor

18. Multi agency work around tackling nuisance motorbikes resulted in reduction of complaints during summer holidays to police and parks. Several Section 59's have been served on individuals identified via Leeds Watch footage and tenancy warnings served on 2 properties where bikes were being stored. Calls for service from the police have reduced compared to previous year.

Hate Crime Marac

19. Coordinated multi agency working is recognised as the most effective response to all issues of crime and disorder, including agency responses to the victims and perpetrators of Hate Crime. The hate crime sub group has been re-organised in April 2010 and become a Hate Crime Multi-Agency Risk Assessment Conference (HC MARAC) The overall objectives of the group is t :
- Support and assist victims of hate crime in order to protect them and ensure that they are not re-victimised and
 - Ensure that effective coordinated multi agency enforcement action is taken against perpetrators of hate crime to prevent their re-offending and to ensure successful prosecution outcomes at Court.
 - Contribute to the "Hate crime reduction agenda in Leeds".
20. Overall the Outer East area has shown a decrease of 23.53% of hate crimes reported, this equates to a reduction of 16 crimes - A total of 52 crimes reported compared to 68 during 09/10.

Domestic Violence Marac

21. The North East Divisional MARAC continues to meet monthly to develop multi-agency interventions to support victims of domestic violence. Overall a very successful year in relation to reduction of repeat victimisation of cases managed through the Marac.

Total ASBO'S in North East Divison – 7

22. **Current ASBO'S by ward :**
- Garforth & Swillington - Nil
 - Kippax and Villages – Nil
 - Temple Newsam 1 (interim order)
 - Crossgates & Whinmoor – Nil

23. **ASBO Warnings served:**

- Garforth & Swillington - Nil
- Kippax and Villages – Nil
- Temple Newsam – Nil
- Crossgates & Whinmoor - Nil

24. **Injunction Data**

- Garforth & Swillington - Nil
- Kippax and Villages- Nil
- Temple Newsam -Nil
- Crossgates & Whinmoor - 1

Overall Performance of North East Divisional Community Safety Partnership
and Ward crime statistics

Performance Matrix – March 2011 - North East Leeds

Safer Leeds

tackling drugs and crime

Priority Indicators	2010/11 Target	YTD	RAG Trend	Out-turn for 2010/11	Assessment	
NI 15: Reduce the level of serious violent crimes	158	151		151	Better than Target Projection: Stable Better than Peers	Out-turn is 4.4% better than the target.
NI 16: Reduce the level of serious acquisitive crimes	6,850	7,169		7,169	Better than Outturn Projection: Stable Worse than Peers	2010/11 out-turn is 1% better than the out-turn for 2009/10.
SL: Reduce the level of Domestic Burglary	3,258	3,615		3,615	Better than Outturn Projection: Stable Worse than Peers	2010/11 out-turn is 1.6% better than the out-turn for 2009/10.
NI 20: Reduce the level of assault with injury crime	1,704	1,741		1,741	Worse than Outturn Projection: Getting Worse Worse than Peers	2010/11 out-turn is 12% worse than the out-turn for 2009/10.
NI 32: Reduce the repeat victimisation rate for those domestic violence cases being managed by a MARAC	22%	11%		11%		Rolling year end result better than the target
WYP: Increase the proportion of residents who agree that the police and local council are dealing with the ASB & crime issues that matter in their area	54.7%	53.0%		53.0%	Worse than Outturn Trend: Stable	2010/11 out-turn is 0.7% worse than the out-turn for 2009/10.

Crime & ASB:10/11

25. The below statistics show crime and anti-social behaviour from 1 April 2009 until 31 March 2010 compared to the same dates for previous year.

Crime & ASB Comparison: 2009/2010 to 2010/11 Garforth & Swilington, Kippax & Methley

CRIME	Garforth & Swilington			
	09/10	10/11	Diff	% Inc / Dec
AGGRAVATED TWOC	2	3	1	50.00
ARSON	10	7	-3	-30.00
ASSAULT	88	85	-3	-3.41
BURGLARY DWELLING	94	127	33	35.11
BURGLARY OTHER	141	111	-30	-21.28
CRIMINAL DAMAGE - BUILDING NON DWELLING	31	13	-18	-58.06
CRIMINAL DAMAGE - DWELLING	29	40	11	37.93
CRIMINAL DAMAGE - MOTOR VEHICLE	79	93	14	17.72
CRIMINAL DAMAGE - NON SPECIFIC	49	31	-18	-36.73
ROBBERY	9	6	-3	-33.33
THEFT FROM PERSON	9	10	1	11.11
THEFT FROM VEHICLE	74	64	-10	-13.51
THEFT OF VEHICLE	15	19	4	26.67
TWOC	10	7	-3	-30.00
Grand Total	640	616	-24	-3.75
ANTISOCIAL BEHAVIOUR CALLS	853	825	-28	-3.28
Hate Crime	5	9	4	80.00

CRIME	Kippax & Methley			
	09/10	10/11	Diff	% Inc / Dec
AGGRAVATED TWOC	1	3	2	200.00
ARSON	14	20	6	42.86
ASSAULT	95	107	12	12.63
BURGLARY DWELLING	86	101	15	17.44
BURGLARY OTHER	86	106	20	23.26
CRIMINAL DAMAGE - BUILDING NON DWELLING	20	13	-7	-35.00
CRIMINAL DAMAGE - DWELLING	40	33	-7	-17.50
CRIMINAL DAMAGE - MOTOR VEHICLE	89	58	-31	-34.83
CRIMINAL DAMAGE - NON SPECIFIC	49	29	-20	-40.82
ROBBERY	3	4	1	33.33
THEFT FROM PERSON	3	6	3	100.00
THEFT FROM VEHICLE	45	50	5	11.11
THEFT OF VEHICLE	16	12	-4	-25.00
TWOC	11	7	-4	-36.36
Grand Total	558	549	-9	-1.61

ANTISOCIAL BEHAVIOUR CALLS	1018	998	-20	-1.96
Hate Crime	3	1	-2	-66.67

**Public Confidence and User Satisfaction in the Police
(Garforth & Swillington and Kippax & Villages)**

Public Confidence	March 2010	March 2011	% Increase
Confidence in local policing	55.5	59.8	4.3
NPT ASB			% Decrease
% of residents who think ASB has increased	15.0	12.2	-2.8
NPT Awareness			% Increase
% of residents aware of their NPT	49.9	48.6	-1.3
User Satisfaction	March 2010	March 2011	% Change
Overall satisfaction	78.0	83.1	5.1
Ease of contact	90.0	91.7	0.8
NPT Actions taken	73.6	77.7	4.1
NPT Progress	61.6	61.5	-0.1
NPT Treatment	93.9	96.0	2.1

Crime & ASB Comparison: 2009/ 10 to 2010/11
Temple Newsam

CRIME	09/10	10/11	Diff	% Inc / Dec
AGGRAVATED TWOC	8	0	-8	-100.00
ARSON	16	16	0	0.00
ASSAULT	176	203	27	15.34
BURGLARY DWELLING	372	346	-26	-6.99
BURGLARY OTHER	178	162	-16	-8.99
CRIMINAL DAMAGE - BUILDING NON DWELLING	21	13	-8	-38.10
CRIMINAL DAMAGE - DWELLING	119	113	-6	-5.04
CRIMINAL DAMAGE - MOTOR VEHICLE	133	126	-7	-5.26
CRIMINAL DAMAGE - NON SPECIFIC	56	37	-19	-33.93
ROBBERY	24	13	-11	-45.83
THEFT FROM PERSON	22	23	1	4.55
THEFT FROM VEHICLE	107	187	80	74.77
THEFT OF VEHICLE	19	27	8	42.11
TWOC	15	8	-7	-46.67
Grand Total	1266	1274	8	0.63
ANTISOCIAL BEHAVIOUR CALLS	1131	1019	-112	-9.90
Hate Crime	42	29	-13	-30.95

Crime & ASB Comparison: 2009/10 – 2010/11
Crossgates & Whinmoor

CRIME	09/10	10/11	Differenc e	% Inc / Dec
AGGRAVATED TWOC	3	4	1	33.33
ARSON	16	13	-3	-18.75
ASSAULT	182	198	16	8.79
BURGLARY DWELLING	285	287	2	0.70
BURGLARY OTHER	171	179	8	4.68
CRIMINAL DAMAGE - BUILDING NON DWELLING	47	32	-15	-31.91
CRIMINAL DAMAGE - DWELLING	110	115	5	4.55
CRIMINAL DAMAGE - MOTOR VEHICLE	158	137	-21	-13.29
CRIMINAL DAMAGE - NON SPECIFIC	73	53	-20	-27.40
ROBBERY	10	14	4	40.00
THEFT FROM PERSON	29	40	11	37.93
THEFT FROM VEHICLE	98	93	-5	-5.10
THEFT OF VEHICLE	25	26	1	4.00
TWOC	18	20	2	11.11
Grand Total	1225	1211	-14	-1.14
ANTISOCIAL BEHAVIOUR CALLS	1399	1414	15	1.07
Hate Crime	18	13	-5	-27.78

**NPT Public Confidence and User Satisfaction in the Police
(Temple Newsam and Crossgates & Whinmoor)**

Public Confidence	March 2010	March 2011	% Increase
Confidence in Local Policing	53.5	54.7	1.2
			% Decrease
% of residents who think ASB has increased	13.2	10.8	-2.4
NPT Awareness			
% of residents aware of their NPT	50.7	53.0	2.3
User Satisfaction	March 2009	March 2010	% Change
Overall satisfaction	79	76.1	-2.9
Ease of contact	90.9	94.2	3.3
NPT Actions Taken	76.4	71.2	-5.2
NPT Progress	68.8	61.2	-7.6
NPT Treatment	91.6	91.9	0.3

Implications for Council Policy and Governance

26. There are no implications for the Council policy and governance.

Legal and Resource Implications

27. There are no legal or resource implications.

Recommendations

28. The Area Committee is asked to note the contents of this report of the North East Divisional Community Safety Partnership.
29. Members are asked to continue supporting the Divisional Community Safety Partnership in relation to prioritising and tackling Burglary Dwelling during 2011/12 through partnership work at neighbourhood level.

Background documents

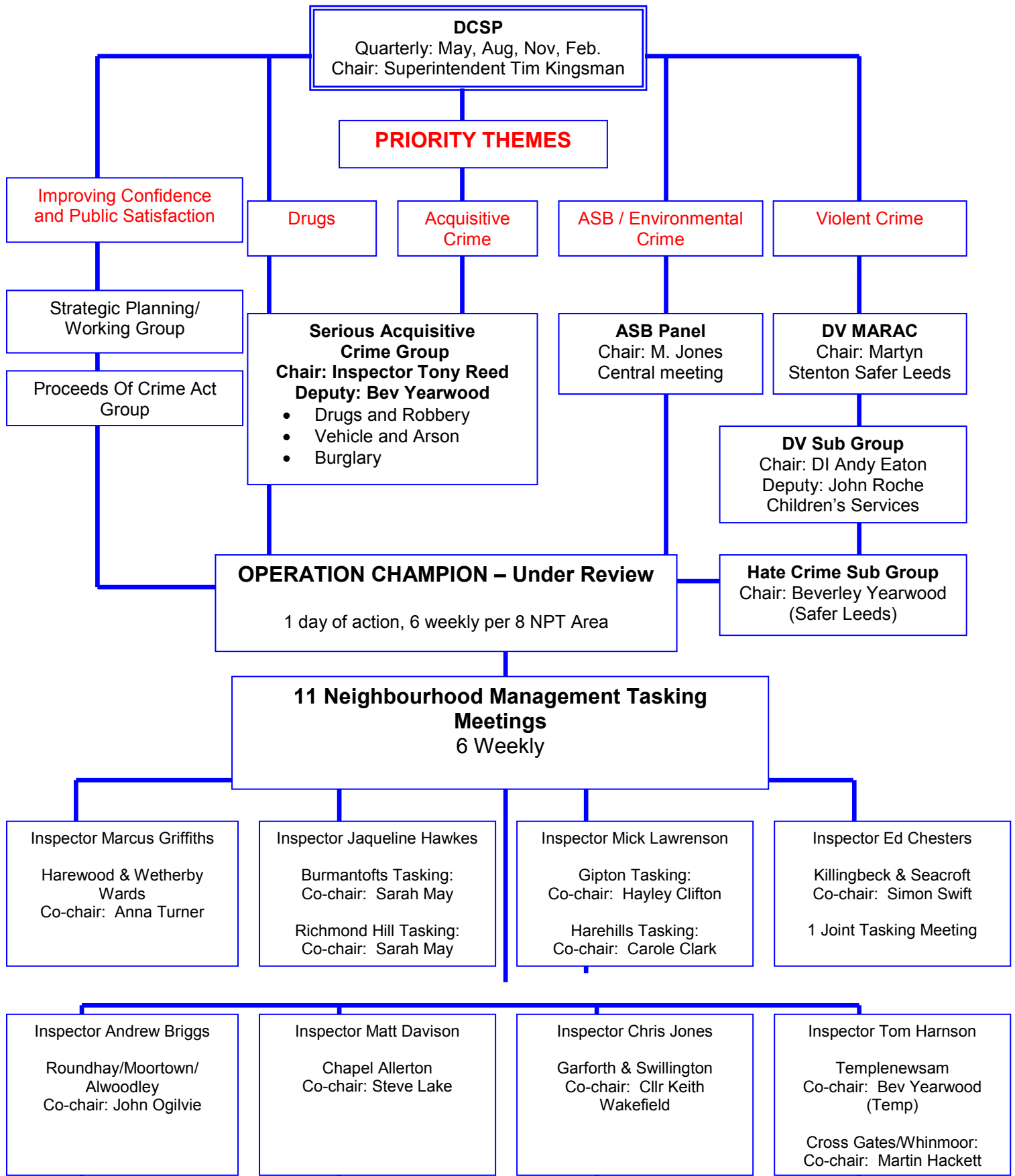
Crime Statistics – North East Police Divisional Intelligence Unit May 2011

DCSP – Safer Leeds Quarterly executive highlight reports (April 1st 2010 - March 31st 2011)

North East Leeds - 2011/12 Targets

Key Performance Indicator	2010/11 Outturn	2011/12 Target
Improve the proportion of residents who believe the police do an excellent or good job	60.3%	60.5%
Improve the overall satisfaction rate for service users	81.8%	82.5%
Improve the overall satisfaction rate for BME service users	75.2%	77.2%
Improve the overall satisfaction rate for White service users	84.8%	85.3%
Continue to tackle the level of acquisitive crime	7,169	7,169
Continue to tackle ASB to impact on the proportion of residents who believe that ASB has increased in their local area	13.1%	13.1%
Continue to tackle the level of serious violent crime	151	151
Stabilise the sanction detection rate for domestic violence	55.1%	54.9%
Stabilise the sanction detection rate for serious sexual offences	23.5%	28.0%
Reduce the level of burglary dwelling	3,615	3,434

North East Division
Divisional Community Safety Partnership



Crossgates and Temple Newsam				
POCA Ref	Date	Brief Description	Organisation	Amount Paid
159	26/03/2010	Halton Moor Community House - Young people from the YOS have been working on the garden at the community house since March 2009. During this time we have landscaped the outside area in preparation for a patio to be laid and raised beds to be built. Groundwork are planning to start building the patio during Easter 2010.	Youth Offending Service	£250
168	16/04/2010	6th Whinmoor Scout Troup - Camping Experiences - On 19th April 2010 6th Whinmoor Scout Troup will open, there is no current provisions for young people aged 10.5 - 14 to be involved in scouting activity area. Outdoor camping is a core part of scouting and encourages a young persons development.	Sixth Whinmoor Scout Group	£210
173	25/05/2010	JSCC Play scheme - Arts and Craft Projects sports days indoor and outdoor. 2/8/10 - 27.8.10.	John Smeaton Community College	£250
180	03/06/2010	50th Anniversary Tea Dance - Thursday 8th July 2010 Students plan a tea dance for older people in area to celebrate 50 years of the school in the community. 50 years display plus artwork and entertainment bridge intergenerational gaps.	Fieldhead Carr Primary School	£250
181	03/06/2010	Reminiscence boxes - Hope would like to develop reminiscence boxes from 1930s-40s-50s-60s to develop "reminiscence sessions" on a regular basis throughout the year.	HOPE - Halton Moore and Osmondthorpe project for elders	£250
208	04/08/2010	Multi-Sensory Room - To create a multi sensory room to benefit pupils with SEN needs within school and the local community. The whole project is estimated at £12000. We have secured funding of £7000 from the inclusion team, Leeds city council. Fund raising will raise approx £2000, leaving a shortfall of £3000. We will continue to fundraise to raise a further £3000 but many pupils and local residents would benefit from this facility sooner than this could be achieved. Ideally we would like to complete this work during Autumn 2010.	Fieldhead Carr Primary School	£250
221	24/09/2010	16 days of action - On a date to be fixed within Domestic Abuse 16 Days of Action Week. A one off(maybe leading to more) Group/drop in session for women, to raise awareness/share experiences/ask questions, re Probation DA programmes, and DA issues generally. Look at safety strategies for themselves and children. This is planned in collaboration with Swarcliffe Children's Centre, Langbar Road, Leeds LS14 3BU, Manager Lizzie Haigh. This is a high DA area, with many attending the centre affected by DA, and also co clients of VSU. A meeting will be held to determine likely numbers attending, but would prefer to plan for event between 10 am and 12noon, when women are most likely to be free to attend.	West Yorkshire Probation Trust	£150
232	17/11/2010	Stephen Lawrence Education Standard Launch Event - Wednesday 2nd February 2011 The event will be to launch our dedication to achieving the "Stephen Lawrence Education Standard" for the centre. This is to show that we are committed to challenging racism and creating cohesion within the Halton Moor community; raising awareness of equality & diversity and working with key partners to provide families with opportunities to build their future. The "activity session" will include arts & crafts sessions; music & movement; food tasting; learning new language & Makaton; Henna painting etc. All activities aim to represent and celebrate the diverse make-up of our community. The colour theme will be black & white. We also hope to use decorations relating to "Chinese New Year". Following on from the activity sessions there will be a free prize draw with gifts also linked to multi-cultural themes. Finally there will be a launch of the black & white balloons – released by members of the community and partner agencies to show our unity.	Emma Anderton Deputy Childrens Manager	£250
264	01/02/2011	Spring News Letter - To fund the Spring Edition of the quarterly newsletter which will go out in March to 600 plus older people in the area/ This Issue will include a feature on nutrition as malnutrition is a significant problem amongst elderly people. It also has details of our regular activities and the service we provide.	Crossgates and District Good Neighbours Scheme	£285
275	14/02/2011	Printing and distribution of publicity leaflets - To procure the printing and distribution of 1500 A5 Colour leaflets to promote work of the association throughout 2011 and the forthcoming AGM.	Halton Moor Residents Ass	£250

285	24/02/2011	New Vault for Temple Newsam Gym Club - This is Jane Townend from Temple Newsam/Halton Gymnastic Club run in and around the Leeds 9/Leeds 15/Leeds 14 Area. I have just had a little memo from a Mr Hackett in connection with possibly applying for any funding which would help us raise funds to replace our old large balance beam. Hopefully from the POCA Funding scheme. Our club has applied for a bag-packing weekend to start the balance as the full cost of the beam is ?1800.00. We are currently looking into MICE funding which hopefully will help with the cost. If possible could you see if there is any forms/funding we could start to apply for-I would be very grateful.	Temple Newsam Gym Club	£500
291	01/03/2011	Whinmoor Warriors Equipment - The funding would be used for equipment such as tackle bags, balls, cones, training equipment for the younger teams (ages 10 - 12) but we would also like to buy equipment to keep the grounds in a good working order. We rent the building and grounds from the Leeds City Council and the local school. The school leave the rugby pitches for us to sort and mark out. We would like to be able to dig it over, flatten it out and keep it in good working order to make sure it is safe for the children to use. At the moment there are bumps, holes and rough areas that need to be cleared so the pitch is safe for all to use and we are unable to use it. Some of the children haven't had any training for a few weeks which is hard as they look forward to the rugby nights and it is also a release for some of the youngsters after being in school all day.	Whinmoor Warriors	£500

Garforth and Villages

POCA Ref	Date	Brief Description	Organisation	Amount Paid
153	11/03/2010	Friends of Billy wood - Kippax - Publicity for the F.O.B.W Group and the work that we do for the up keep of town close hills, known locally as Billy wood. We work once a month clearing litter, keeping paths open, dead hedging or clearing scrub. Also to promote awareness of the flora and fauna on the site and the events taking place there.	Friends of Billy wood	£250
154	11/03/2010	Make it grow - Planting of the borders at our bowling green May - June 2010.	Valley Ridge Bowling Club	£200
155	11/03/2010	Cricket outfield boundary fence - Repair to Hawthorne hedge and netting fence to main road adjacent main play and training area.	Methley Cricket Club	£250
162	26/03/2010	Allerton Bywater ARLFC Junior Development - Training Courses such as coaching, first aid and child protection. These courses will allow them to increase their own portfolio of skills with the possibility of gaining employment	Allerton Bywater ARLFC	£250
164	31/03/2010	To Enhance Swillington St Mary's Scout Group - To put cork boards up on our premises walls for display. To purchase a large play parachute. To Fund tobogganing trip to Xscape.	Swillington St Mary's	£250
166	15/03/2010	Ledston Luck Fete - 25.7.10	Ledston Luck	£250
167	15/03/2010	Swillington Community Centre Committee Electric cooker and fitting. Needed as replacement for general use of community.	Swillington Community Centre	£250
184	16/06/2010	Methleyfest 2010 - Traditional village fete/carnival event. Stalls, exhibits, displays, games, activities, live music, refreshments. Opened by the lord mayor of Leeds. Monday 30th August 2010.	Methleyfest Organisation committee	£250
187	01/07/2010	BMX Competition/event to take place on 24/07/2010 - To raise the profile of Micklefield and get the youths involved in recreational activities and to focus on the event as opposed to anti social behaviour, there will be a BMX competition, there will hopefully be the Territorial Army, Fire service and other activities on the football pitch	British Transport Police	£250
197	15/07/2010	Methley United Juniors Mini Soccer - Equipment to set up new under 5s mini soccer scheme.	Methley United JFC	£242
200	23/07/2010	Methley United Junior Training Kits - We are a small self funded football team and our players have outgrown their training tops. We wish to provide the team with tops for the start of the new football season starting 11th September.	Methley United Juniors	£250

207	30/07/2010	Friday Night Project - The Friday Night Project will take place at Kippax Leisure Centre. The project is aimed at providing young people with a positive activity to participate in, in their local community. During this project the young people will have the opportunity to participate in swimming, various sports activities, arts and crafts and DJ-ing. The activity is aimed at reducing anti-social behaviour. We are looking to start on Friday 3rd Sept until Friday 22nd Oct.	LCC	£250
211	12/08/2010	Swillington Youth Club - At the Swillington youth Club the young people have a lack of activities and resources to help them engage in positive activities. Therefore the young people have suggested that they would like to do a DJ workshop. We would part fund this project and part pay for the equipment.	Allerton Bywater Youth and Adult Centre	£250
220	24/09/2010	Kippax in Bloom - Autumn Planting of shrubs and plants to improve and extend the floral display beds.	Kippax in Bloom	£250
227	11/10/2010	Junior Football - We are running a junior football team in the area open to boys and girls in year 4 of schooling. We aim to provide enjoyment, exercise and also the opportunity to meet new friends.	Kippax Athletic Under 9s JFC	£250
260	24/01/2011	Production of Disney's Jungle Book -Workshops twice a week (Thursdays and Fridays 7-9pm) culminating in 2 performances at Garforth Academy in May/June dates to be finalised by the academy.	St Mary's Youth Theatre	£500
262	24/01/2011	U14s Toulouse Tour - we are taking the full U14 team on a rugby tour to Toulouse in France. We plan to travel during w/c 18/4, where we will play two competitive games	Garforth Tigers	£250
272	08/02/2011	GPCCC - Junior Kit - We are an amateur cricket side playing in the Wetherby Cricket League, and have just been promoted to division one for the 2011 season and our second team will be competing in division five. GPCCC has a strong junior section, with many of our current senior players having played for our junior sides. Three junior age groups are in place: Under 13's, under 15's and under 17's. Based off Green lane in Garforth we own our own ground and all the work to run the club is provided on a voluntary basis. Our players and members all love a game of cricket and enjoy a family environment. We are finding our Junior side is growing and growing and we would like to be able to purchase kit for the Juniors who attend. Not all Young People have a bat / pads or a helmet and we want to give everyone the same opportunity we would not discourage anyone from playing. If we were able to purchase a Junior Kit Bag. This could be used at all times – practice sessions and matches.	GPCCC	£500